

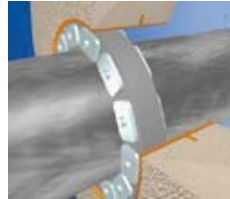
Canada Distributer for Link Seal and Century Line Pipe Wall Sleeves
POWER PLANT SUPPLY CO

Ontario/Quebec/West 416 752 3339, Atlantic Canada 902 435 9899, Newfoundland and Labrador 709 747 7650
<http://www.powercanadasolutions.com/wallsleeve.html>

Link-Seal®...the world's standard for sealing pipe penetrations
passing through walls, floors and ceilings.

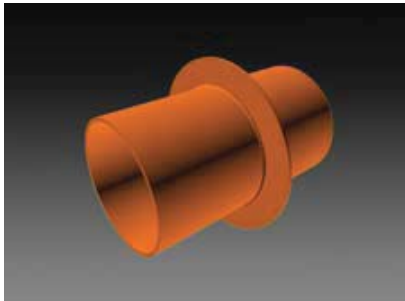


<mailto:atlantic@powerplantsupplyco.com>



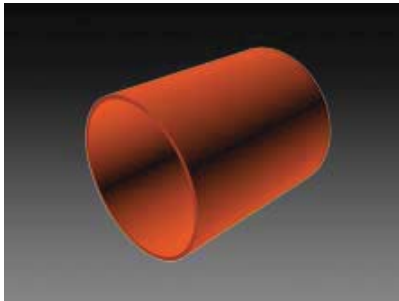
DESCRIPTIONS

Model WS Wall Sleeves



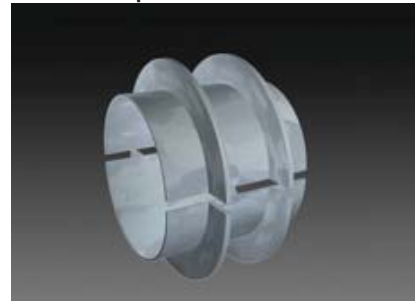
Model WS Steel Wall Sleeves are an excellent choice for installations where the Link-Seal® Modular Seal and WS sleeve assembly would be subject to extremely high temperatures or where fire seals are specified.

Model WS Intermediate Sleeves



WS Intermediate Sleeves are used in conjunction with Link-Seal® Modular Seals to seal all pipes passing through concrete or masonry structures that require two belts of seals to fill the annular space between pipe and wall.

Model WS Split Sleeves



Model WS Split Sleeves are used for installations where an existing pipe run needs to penetrate a wall yet to be constructed. During wall installation a split sleeve is welded around the existing pipe and positioned in the form to center the pipe. After installation a Link-Seal® Modular Seal is used to seal the annular space between split sleeve and pipe.

BENEFITS/FEATURES

WS Steel Sleeves

- Available from 2.07" (52.6mm) to 23.25" (59.1mm) Inside Diameters.
- 2" (50.8mm) Water Stop Collar with continuous weld-bead on both sides.
- Primed inside and out with Rust-O-Leum red primer #5268 or approved equivalent.
- May be order to any length.
- Special order diameters and schedule

WS Intermediate Sleeves

- Available from 2.07 (52.6mm) to 29.25 (74.3cm) Inside Diameters.
- Standard wall thickness = 0.375".
- Primed inside and out with Rust-O-Leum red primer #5268 or approved equivalent.
- May be order to any length.
- Special order diameters and schedule pipe available on request.

WS Split Sleeves

- Available from 2.07 (52.6mm) to 29.25 (74.3cm) Inside Diameters.
- Standard wall thickness = Schedule 40 for up to 10"Ø
- Standard wall thickness = 0.375" for 12"Ø and above.
- Two 2" water stop collars for added structural stability.
- Primed inside and out with

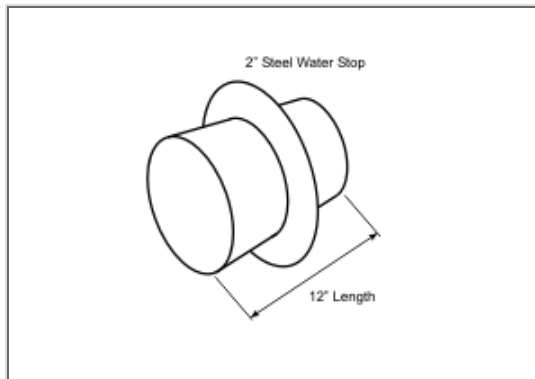
<http://www.powercanadasolutions.com/wallsleeve.html>

pipe available on request.

Rust-O-Leum red primer #5268 or approved equivalent.

- May be order to any length.
- Special order diameters and schedule pipe available on request.

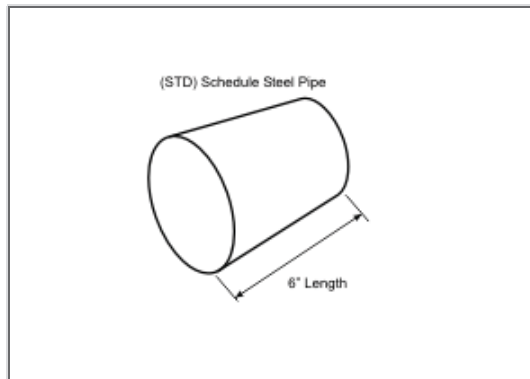
DIMENSIONAL DATA - PART NUMBERS



**MODEL WS STEEL SLEEVES
(12" length)**

MODEL	I.D.	lbs.	Kg.
WS-2-15-S-12	2.07	5.53	2.51
WS-2-1/2-20-S-12	2.47	7.91	3.58
WS-3-21-S-12	3.07	9.93	4.51
WS-3-1/2-22-S-12	3.55	11.70	5.31
WS-4-23-S-12	4.03	13.61	6.17
WS-5-25-S-12	5.05	17.91	8.12
WS-6-28-S-12	6.07	22.73	10.31
ws-6-18-S-12	6.25	14.82	6.72
WS-8-32-S-12	7.98	33.55	15.22
ws-8-18-S-12	8.25	21.94	9.95
WS-10-36-S-12	10.02	46.12	20.92
ws-10-25-S-12	10.25	33.67	15.27
WS-12-37-S-12	12.00	60.14	27.28
WS-14-37-S-12	13.25	62.04	28.14
WS-16-37-S-12	15.25	71.04	32.22
WS-18-37-S-12	17.25	79.98	36.28
WS-20-37-S-12	19.25	90.00	40.82
WS-22-37-S-12	21.25	98.00	44.45
WS-24-37-S-12	23.25	107.00	48.53

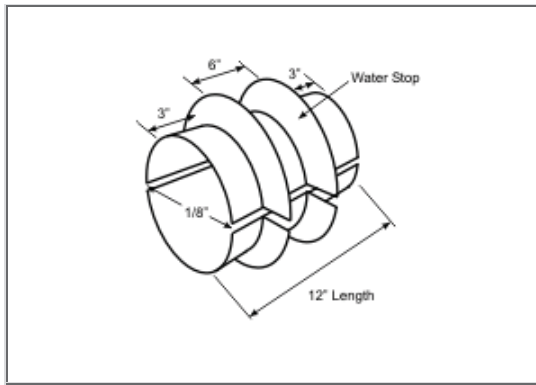
Note: WS sizes through 10" are schedule 40. WS sizes 12" and up have a standard 0.375" wall thickness. ws rolled sleeves (6" and 8") = 0.1875 wall thickness; (10") = 0.25" wall thickness.



**MODEL WS INTERMEDIATE SLEEVES
(6" length)**

MODEL	I.D.	lbs.	Kg.
WS-2-15-S-6NW	2.07	1.83	0.83
WS-2-1/2-27-S-6NW	2.47	2.90	1.31
WS-3-21-S-6NW	3.07	3.79	1.72
WS-3-1/2-22-S-6NW	3.55	4.55	2.07
WS-4-23-S-6NW	4.03	5.40	2.45
WS-5-25-S-6NW	5.05	7.31	3.32
WS-6-28-S-6NW	6.07	9.49	4.30
WS-8-32-S-6NW	7.98	14.28	6.48
WS-10-36-S-6NW	10.02	20.24	9.18
WS-12-37-S-6NW	12.00	24.78	11.24
WS-14-37-S-6NW	13.25	27.29	12.38
WS-16-37-S-6NW	15.25	31.29	14.20
WS-18-37-S-6NW	17.25	35.30	16.01
WS-20-37-S-6NW	19.25	39.30	17.83
WS-22-37-S-6NW	21.25	43.30	19.64
WS-24-37-S-6NW	23.25	47.31	21.47
WS-26-37-S-6NW	25.25	51.30	23.28
WS-28-37-S-6NW	27.25	55.30	25.09
WS-30-37-S-6NW	29.25	59.30	26.91

Note: Intermediate sleeves are 6" in length, with no welded water-stop collar.
NW = No Water-Stop Collar



**Model WS Split Sleeves
(12" length)**

MODEL	I.D.
WS-2-15-S-12DWS	2.07
WS-2-1/2-27-S-12DWS	2.47
WS-3-21-S-12DWS	3.07
WS-3-1/2-22-S-12DWS	3.55
WS-4-23-S-12DWS	4.03
WS-5-25-S-12DWS	5.05
WS-6-28-S-12DWS	6.07
WS-8-32-S-12DWS	7.98
WS-10-36-S-12DWS	10.02
WS-12-37-S-12DWS	12.00
WS-14-37-S-12DWS	13.25
WS-16-37-S-12DWS	15.25
WS-18-37-S-12DWS	17.25
WS-20-37-S-12DWS	19.25
WS-22-37-S-12DWS	21.25
WS-24-37-S-12DWS	23.25
WS-26-37-S-12DWS	25.25
WS-28-37-S-12DWS	27.25
WS-30-37-S-12DWS	29.25

Note: Items made to order and may not be returned or exchanged. Model WS Split Sleeves furnished Galvanized shall be galvanized after all welding, cutting and cleaning has been completed.
E Measurement must always be 1/8" for welding purposes.
 Model Number **DWS** = Double Water-Stop Split Sleeve.

WARRANTY

All products are warranted against failure caused by manufacturing defects for a period of one year. Any product found to be so defective and returned within one year from date of shipment will be replaced without charge. The above warranty is made in lieu of, and we disclaim, any and all other warranties,

expressed or implied, including the warranties of merchantability and fitness for a particular purpose, and buyer agrees to accept the products without any such warranties. We hereby disclaim any obligation or liability for consequential damages, labor costs or any other claims or liabilities of any kind whatsoever.

<http://www.powercanadasolutions.com/wallsleeve.html>

<mailto:atlantic@powerplantsupplyco.com>